



Mechanical Products Company

Small Frame Battery Selector

Disconnect Switch

with integrated Circuit Breaker

Manual Reset with On-Off function

Panel or Surface Mount

Ignition-Protected

IP66 Weatherproof

Patent No.: US 12,417,889

SERIES 67

**RAISING THE BAR
MP - COUNT ON IT**



SUPERIOR CIRCUIT PROTECTION

www.mechprod.com

Series 67 Overview

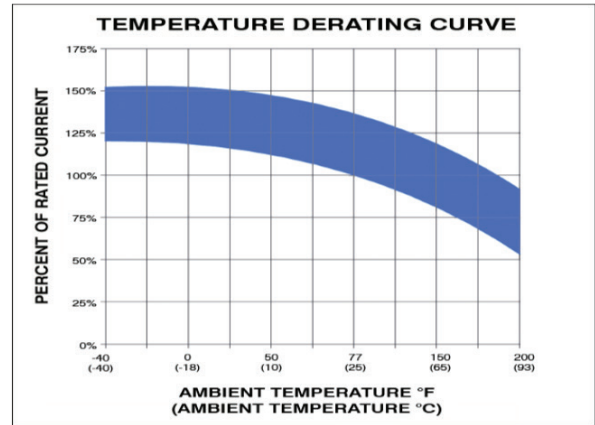
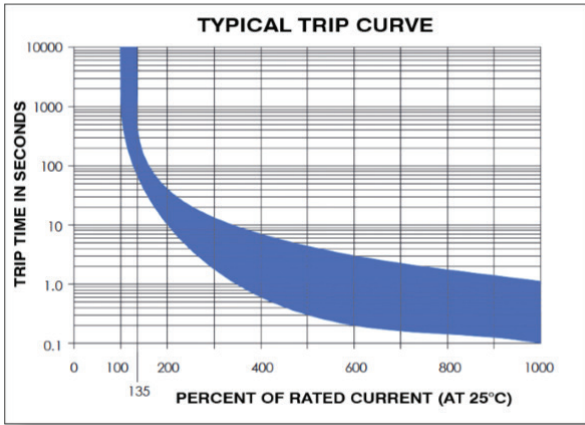
FEATURES:

- Plated copper studs for maximum conductivity and corrosion resistance
- Studs accept 3/8" (M10) ring terminals
- One-piece terminal stud design never loosens over time
- 7/8" (22.22mm) stud length accepts multiple cable terminals
- Fits most industry standard battery switch mounting cutout patterns
- Tactile indicator conveys knob position by feel
- Lockout feature available (consult factory)
- Suitable for Marine, Truck, Bus, RV, Con-Ag, and Commercial vehicles

Series 67 Specifications

Standard Amp Ratings	30, 40, 50, 60, 70, 80, 90, 100, 120, 135 & 150 Amps
Maximum Voltage Rating	42VDC
Crank Rating: 30 Sec.	900 Amp output terminal
Intermittent Rating: 5 Min.	500 Amp
Continuous Rating	300 Amp
Interrupt Capacity	3000A @ 14 VDC 1500A @ 42 VDC
Switching Cycles	5000
Overload Endurance	Motor load rated per UL1077, OL1
ACC Circuit Protection	ACC circuit must hold 100% of protection rating at 25°C/77°F & must trip at 135% of protection rating within 1 hour
Operating Temperature Range	-40°C/-40°F to 85°C/185°F
Weight	14.75 oz (0.418 kg)
Terminal Stud Size	3/8"-16
Max. Terminal Stud Torque	180 in-lb (20.34 N-m)
Mounting	Accepts #10 screw
Cable Size to meet Ratings *	4/0 AWG (120mm ²) *reducing cable size will reduce current rating
Cable Clearance for 4/0 Cables	1.10" (27.9mm)
	Environmental
Ignition Protected	UL1500/SAE J1171
Ingress Protection (IP Rating)	IP66 / IEC 60529
Corrosion	MIL-STD-202, Method 101, Test Condition A, 96 hours.
Humidity	MIL-STD-202, Method 106, for 240 hours at 95% RH.
Shock	100g per MIL-STD-202, Method 213, Test Condition A.
Vibration	10g per MIL-STD-204, Test Condition A.
	Regulatory Compliance Summary (Compliance Pending)
	Ignition Protected: UL1500/SAE J1171 Dielectric Strength: UL1107 Interrupt Capacity: ABYC-E11 SAE J553 UL OL1
Other	Dimensions align with industry standards





Typical Overload Trip Time Data (in seconds)

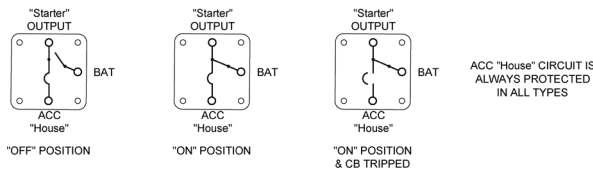
Current Rating	200%	400%	600%	800 %	1000%
30-150 Amps	10-40	0.6-7.0	0.2-3.0	0.15- 2.0	0.09-1.2

Ambient Temperature Correction Factor		
F°	C°	30-150A
-40	-40	0.80
0	-18	0.84
50	10	0.87
77	25	1.00
150	65	1.22
200	93	1.47

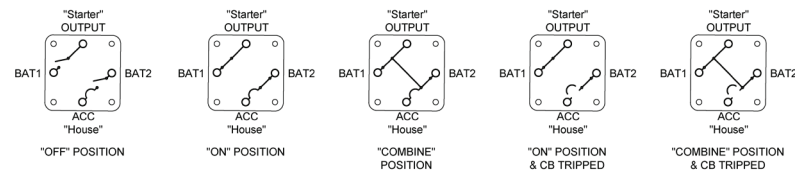
Series 67 Physical Configuration



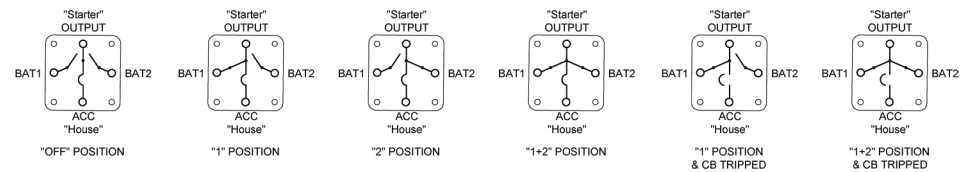
Type 2: Single Input ON/OFF (2 Position)



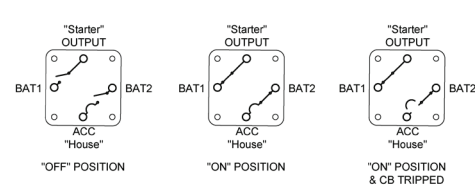
Type 3: Dual Plus (3 Position)

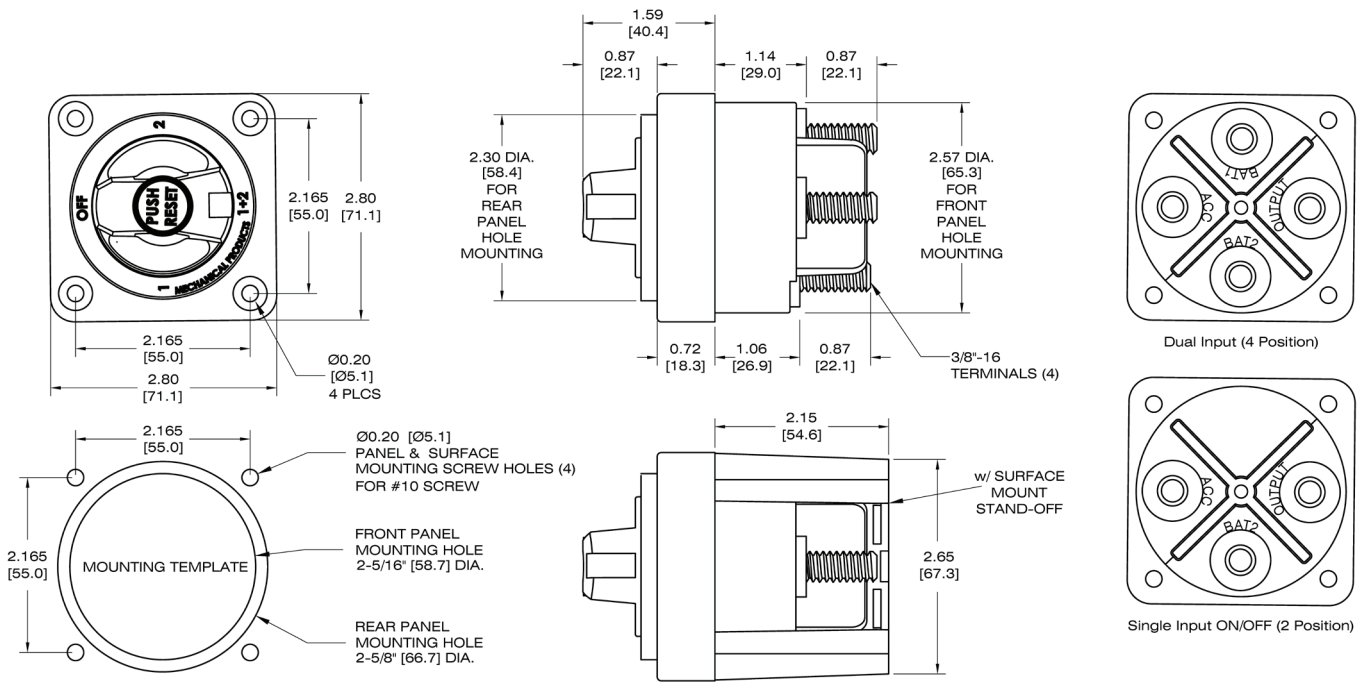


Type 4: Dual Input (4 Position)

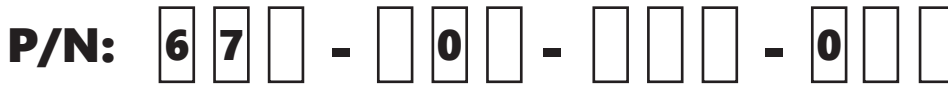


Type 5: Dual Input ON/OFF (2 Position)





Series 67 Part Numbering Guide



Series Number
67 = Series Circuit Protector

Standoff
S = Surface mount standoff
(Blank if not used)

Terminal Hardware
0 = No Hardware
3 = Stainless Steel Flange Nuts (Bulk)
4 = Stainless Steel Flange Nuts (Installed)

Mounting Hardware
0 = No Hardware

Amp Rating
030 = 30A 090 = 90A
040 = 40A 100 = 100A
050 = 50A 120 = 120A
060 = 60A 135 = 135A
070 = 70A 150 = 150A
080 = 80A
(Consult factory for additional ratings)

Color Options
1 = Red
2 = Black (Consult Factory)

Mounting Options
P = Panel Mount
See suffix for Surface mount standoff

*Use p/n 67-S to order
Surface mount standoff separately

Type Battery System Power Switch, AUX Circuit Protection

2 = Single Input ON/OFF (2 Position)
OFF
ON (OUTPUT + CB/ACC)

3 = Dual Plus, Dual Inputs
& Circuits w/Combine Option (3 Position)
OFF
ON (BAT1 = OUTPUT, BAT2 = CB/ACC)
Combined Bat 1+2 (OUTPUT + CB/ACC)

4 = Dual Input (4 Position)
OFF
BAT1 (OUTPUT + CB/ACC)
BAT2 (OUTPUT + CB/ACC)
BAT 1+2 (OUTPUT + CB/ACC)

5 = Dual Input, ON/OFF (2 Position)
OFF
ON (BAT1 = OUTPUT, BAT2 = CB/ACC)



1112 N. Garfield St. Lombard, IL 60148 helpme@mechprod.com
phone 630 | 953 | 4100 fax 630 | 953 | 4110 www.mechprod.com

Specifications subject to change QC-4017-E

WARNING: Cancer & Reproductive Harm
www.p65warnings.ca.gov/